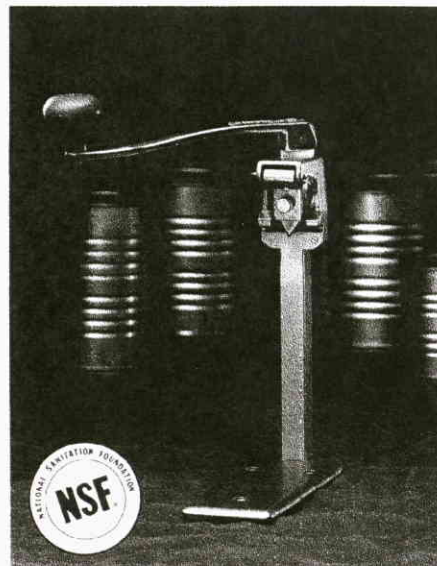
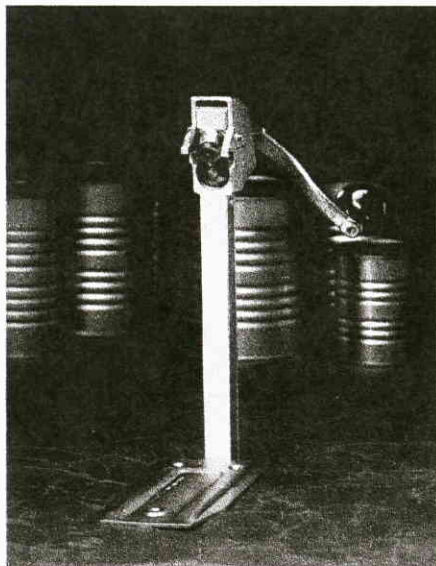
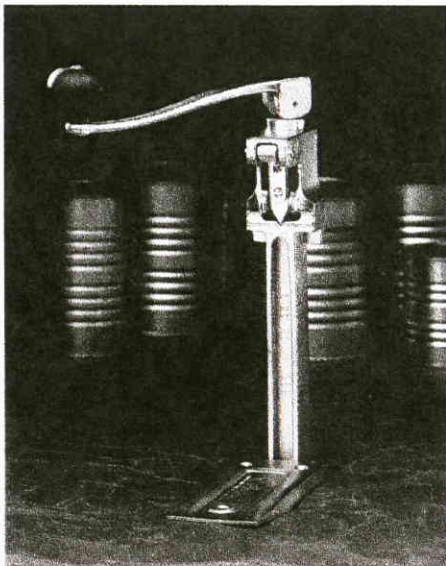


ITEM 46

Can openers that set the standard in foodservice operations around the world.



#1 and #2 Manual Can Openers

"The Old Reliables" — rugged construction and ease of operation. Both the #1 and #2 models are available in a variety of bases; the only difference between models is size.

- Convenient table style
- Tempered steel reversible knife
- Tough cast iron construction
- Bright plated finish
- Easy, quick operation
- Opens most can shapes/sizes
- All parts replaceable
- Available with extra long bar for tall cans

NOTE:

#1 available in choice of bases: plated steel, stainless steel (for cans up to 11" tall) and cast iron w/long bar (for cans up to 17" tall).

#2 available in choice of plated steel base or stainless steel base. With long bar, it will open cans up to 12".

Both models available without base.

#8 Manual Can Opener

This well-constructed can opener features a rotary blade that automatically pierces the can every time you use it. The #8 will open most can shapes and sizes to one gallon.

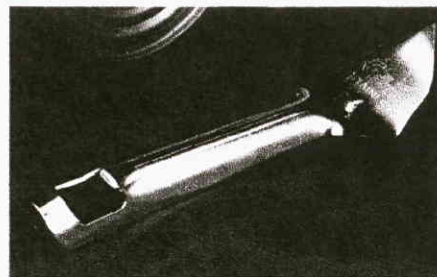
- Rotary blade automatically punctures can
- Rugged, dependable construction
- Convenient table style
- Bright plated finish
- Easy to operate
- All parts replaceable; cutting wheel and gear easily changed
- Opens most shapes/sizes to one gallon

S-11 Manual Can Opener—NSF Listed

"The most sanitary opener in the world" — stainless steel construction with pieces that come apart easily for thorough cleaning and simple maintenance. This top-performing opener will open most can shapes and sizes to 14" high.

- Convenient table style
- Clean, stainless steel construction
- Comes apart easily for cleaning/maintenance
- Corrosion-resistant
- Extra-long tube shank for better fit in base
- Rigid stainless steel base
- Opens most shapes/sizes up to 14"

For additional specifications on S-11 see Bulletin No. 174



#50 Manual Can Opener

King-size can punch and bottle opener. Available in nickel plate or stainless steel.

Also available from Edlund:

#88 Cleaning tool for can openers

Warranty Information

The Edlund Company warrants these products to be free from defects in material and workmanship for a period of one year from date of purchase. The company's obligation under this warranty is limited to repairing or replacing without charge any part or parts found to be defective under normal use. It is the responsibility of the purchaser to return the entire unit to the factory or a factory service branch, transportation charges prepaid. This warranty does not cover parts that must be replaced under normal use, including knives and drive gears on can openers. No other warranty, written or verbal, is authorized by the company.

ED02-100-11/92-10M

Edlund Products for Foodservice
Company, Inc.

159 Industrial Parkway, Burlington, VT 05401
(802) 862-9661 FAX: (802) 862-4822