

GREEN EPOXY COATED
WIRE SHELVING



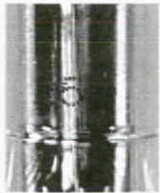
Item #: 56 Qty #: 1 Lot
 Model #: _____
 Project #: _____

with
Optional Casters

WIRE SHELVING

GREEN EPOXY POSTS WITH ADJUSTABLE FOOT

Numbered Posts



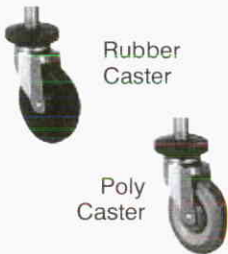
GREEN EPOXY POSTS

MODEL #	Post Height	Boxed Weight
EGP-14	14"	4 lbs.
EGP-34	34"	8 lbs.
EGP-54	54"	12 lbs.
EGP-64	64"	15 lbs.
EGP-74	74"	17 lbs.
EGP-86	86"	20 lbs.

GREEN EPOXY POSTS FOR CASTERS

MODEL #	Post Height	Post Height with Casters	Boxed Weight
EGPC-14	14"	20"	4 lbs.
EGPC-34	34"	40"	8 lbs.
EGPC-54	54"	60"	12 lbs.
EGPC-64	64"	70"	15 lbs.
EGPC-74	74"	80"	17 lbs.
EGPC-86	86"	92"	20 lbs.

Posts are packed 4 to a box.



Rubber Caster

Poly Caster

MODEL #	Shelf Size	Boxed Weight
EG-1424	14" x 24"	35 lbs.
EG-1430	14" x 30"	41 lbs.
EG-1436	14" x 36"	47 lbs.
EG-1442	14" x 42"	52 lbs.
EG-1448	14" x 48"	58 lbs.
*EG-1460	14" x 60"	38 lbs.
*EG-1472	14" x 72"	45 lbs.
EG-1824	18" x 24"	39 lbs.
EG-1830	18" x 30"	45 lbs.
EG-1836	18" x 36"	51 lbs.
EG-1842	18" x 42"	56 lbs.
EG-1848	18" x 48"	64 lbs.
*EG-1854	18" x 54"	35 lbs.
*EG-1860	18" x 60"	41 lbs.
*EG-1872	18" x 72"	49 lbs.
EG-2124	21" x 24"	41 lbs.
EG-2130	21" x 30"	48 lbs.
EG-2136	21" x 36"	55 lbs.
EG-2142	21" x 42"	63 lbs.
EG-2148	21" x 48"	70 lbs.
*EG-2154	21" x 54"	41 lbs.
*EG-2160	21" x 60"	45 lbs.
*EG-2172	21" x 72"	48 lbs.
EG-2424	24" x 24"	44 lbs.
EG-2430	24" x 30"	51 lbs.
EG-2436	24" x 36"	58 lbs.
EG-2442	24" x 42"	64 lbs.
EG-2448	24" x 48"	72 lbs.
*EG-2454	24" x 54"	41 lbs.
*EG-2460	24" x 60"	47 lbs.
*EG-2472	24" x 72"	55 lbs.

24" to 48" length shelves are packed 4 to a box and
 *54", 60" and 72" shelves are packed 2 to a box.

FEATURES:

- 3 truss design (Shelves with 24", 30" & 36" Lengths have two trusses)
- Each shelf holds up to 800 lbs. evenly distributed weight.
- NSF approved for all environments (including Dry, Refrigerators, Freezers, and Warewashing Areas.)
- 10 year warranty.
- Posts are numbered for easy assembly.

CONSTRUCTION:

- Unit assembles using tapered split sleeves.
- For mobile units, 5" swivel Rubber or Poly casters includes set of 4 casters, (2 with brakes) and 4 donut bumpers.

MATERIAL:

Zinc plated wire with green epoxy coating.

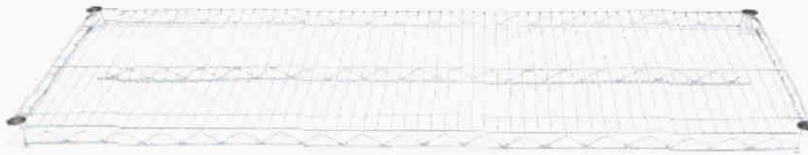
OPTIONAL ACCESSORIES

	MODEL #	Qty
5" Rubber Swivel Stem Caster	EC-25	
5" Poly Swivel Stem Caster	EC-26	

DETAILS and SPECIFICATIONS

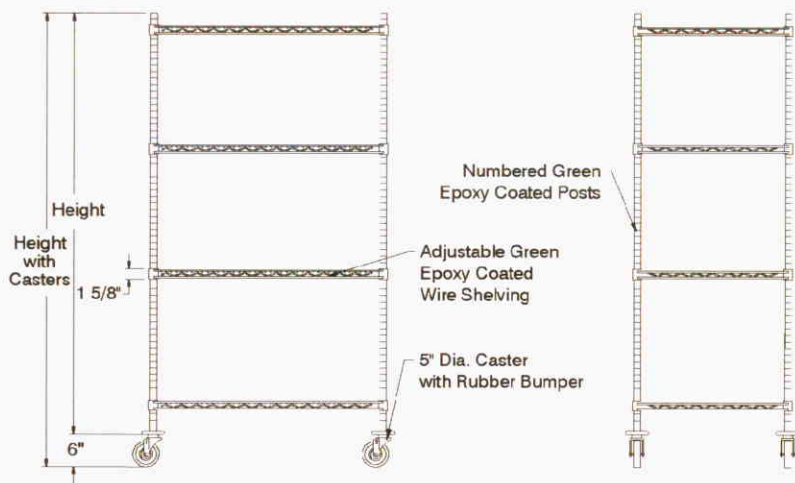
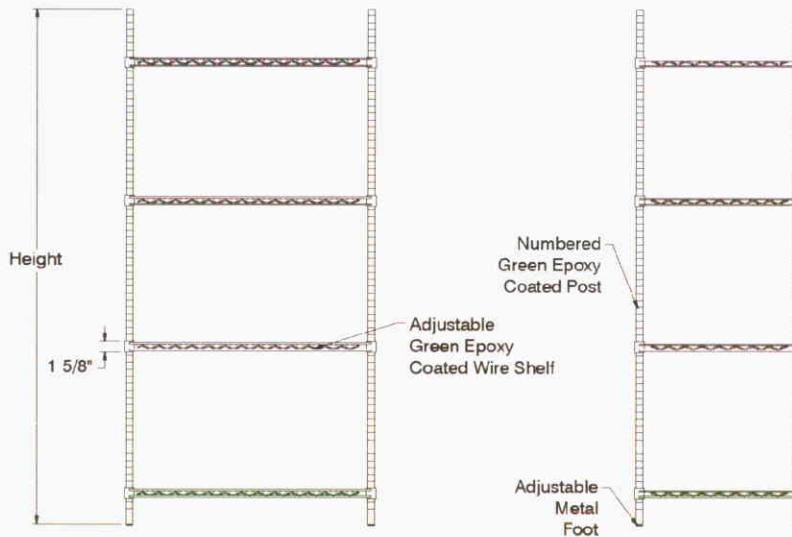
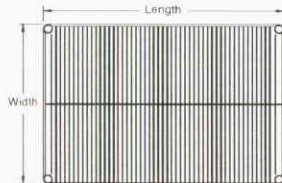
TOL ± .500"

ALL DIMENSIONS ARE TYPICAL



3 Truss Design

(Shelves with 24", 30" & 36" Lengths have two trusses)



With Optional Casters

